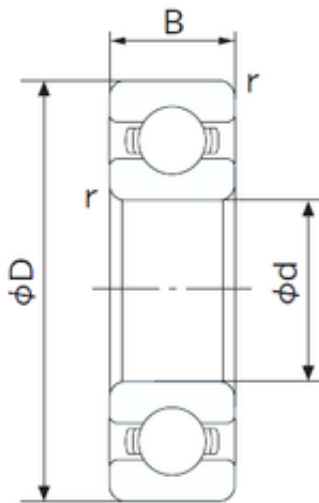




China 6205 Bearing Supplier



62/28 Bearing 2D drawings and 3D CAD models

High-quality NSK NACHI NTN KOYO inch deep groove ball bearings 62/28 62/32 63/22 63/28 63/32 high-speed bearings 28x56x16mm

Bearing No. 62/28

Size	28x58x16 mm
Bore Diameter	28 mm
Outer Diameter	58 mm
Width	16 mm
d	28 mm
D	58 mm
B	16 mm
C	16 mm
r min.	1 mm
da min.	34 mm
Da max.	52 mm
ra max.	1.0 mm
Weight	0.175 Kg
Basic dynamic load rating (C)	17,9 kN
Basic static load rating (C0)	9,75 kN
(Grease) Lubrication Speed	11000 r/min
Enclosure	Open
Bore Type	Cylindrical Bore
Configuration	Single Row
Bore Size	28 mm
Outside Diameter	58 mm
Width	16 mm
Fillet Radius/Chamfer	1 mm
Dynamic Load Rating	17,900 N



China 6205 Bearing Supplier

Static Load Rating	9,750 N
Limiting Speed - Grease	12,000 rpm
Limiting Speed - Oil	14,000 rpm
Factor f_0	13.1
Radial Clearance	0.005 to 0.020 mm
da (min)	34 mm
Da (max)	52 mm
ra (max)	1 mm